

# Genesis Vertical Lift Spec Wizard User Guide



Follow these easy steps to produce a comprehensive, CSI style specification that is customized for your specific project. The output will be in Word or Word Perfect or RTF file format ready for final editing and insertion into your project spec document. The typical time required to generate a specification using the Spec Wizard tool is 5 minutes or less.

This Spec Wizard applies to the following products:

**Genesis Enclosure Model - enclosed vertical platform lift**

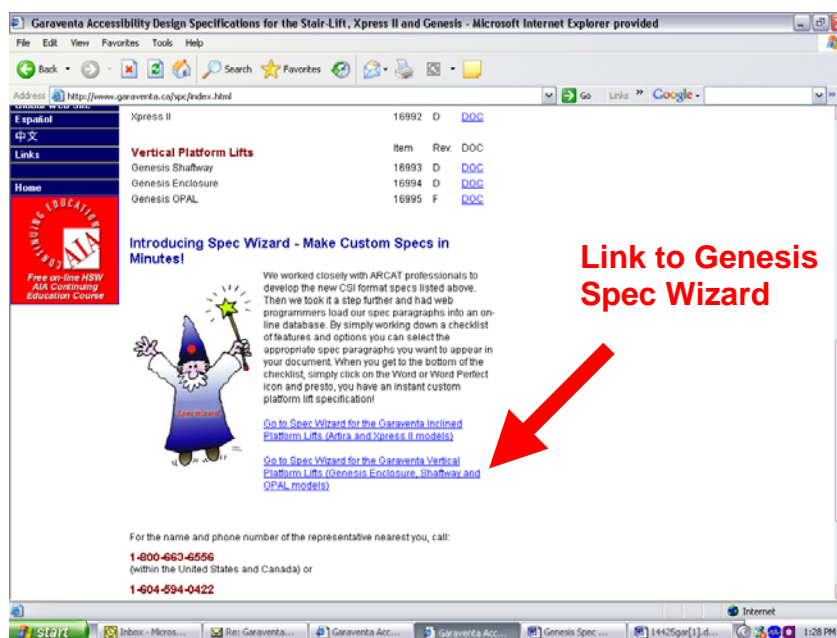
**Genesis Shaftway Model - vertical lift for shaftway by others**

**Genesis OPAL - short-rise unenclosed vertical platform lift**

## Step 1 - Go to the On-Line Spec Wizard Input Form

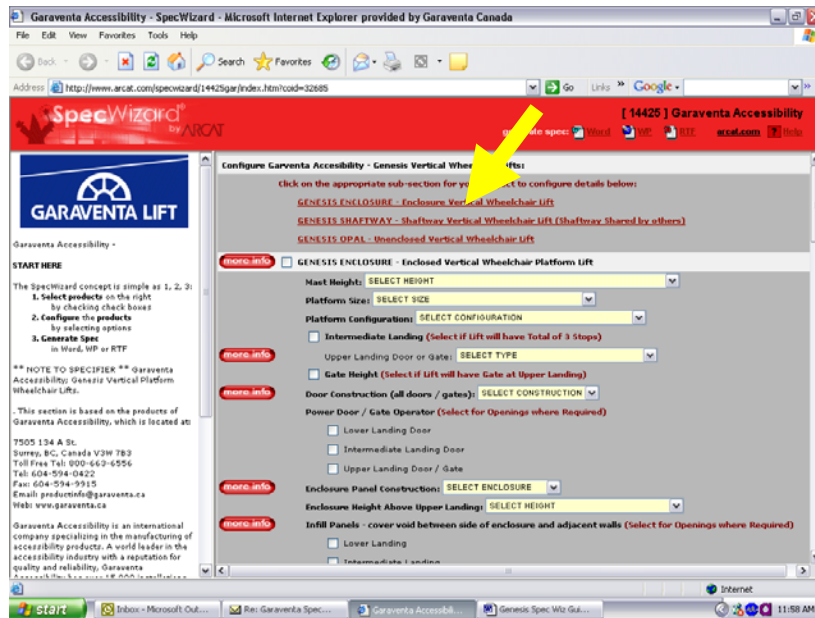
Click on the Genesis Spec Wizard link found on the **Specifications Section** of the Garaventa Lift Web Site or the Specifications page of the Garaventa Dealer Support Web Site (dealers only). These links go directly to the Genesis Spec Wizard page on the ARCAT web site where the Spec Wizard is hosted.

Go to: [www.garaventa.ca/spc](http://www.garaventa.ca/spc) and scroll to bottom of page.



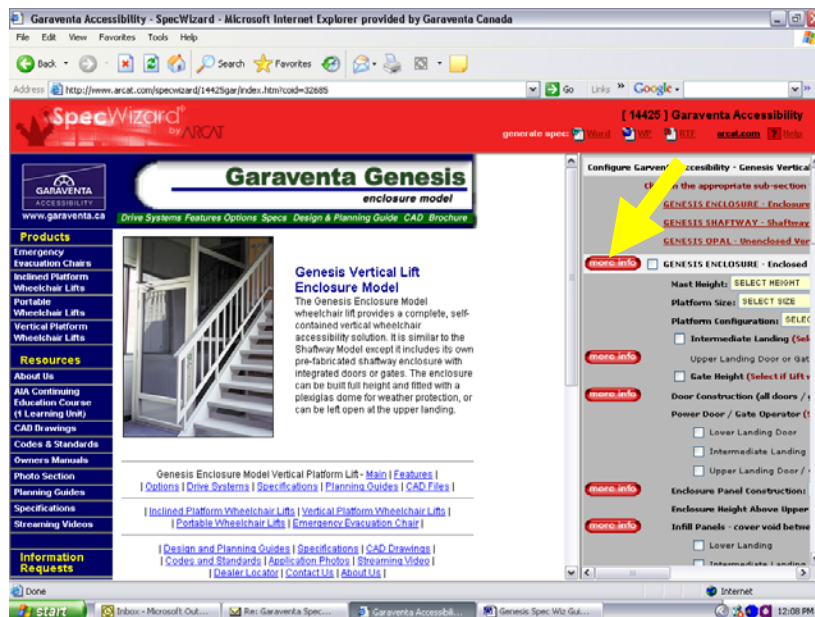
## Step 2 - Go the Section for the Genesis Model You Need

The Spec Wizard form is divided into 3 sections based on the 3 Genesis models. Click on the appropriate model at the top of the page. This will jump you to the start of the appropriate Spec Wizard section.



## Step 3 - Get More Information on Genesis Models

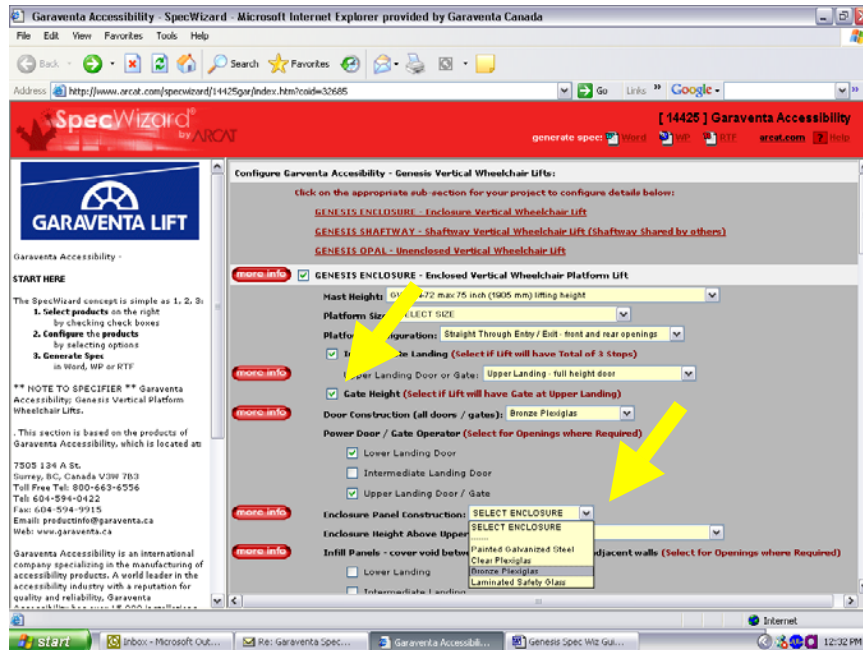
For more info on each model click on the red **more info** button at the top of each Genesis model section. This will open Garaventa's web page on that model.



## Step 4 - Configure the Lift and Select Options

Work down the form using the tick boxes and drop-down lists. The drop-down lists are used where only one selection is permitted. Use the red **more info** buttons to get more details.

**Caution: Unless you are very familiar with local codes and standards for vertical platform lifts we strongly suggest you contact your local Garaventa Dealer for assistance before writing the final project specification.**



## Option Selection Tips

### Select Items Only from Within the Section for One Model

All configuration and option selections must be made from within a single section of the Spec Wizard. Do **NOT** select some items from the Enclosure section and others from the Shaftway section. A spec document will be produced but it will not make sense.

### Platform Controls and Call Station Controls

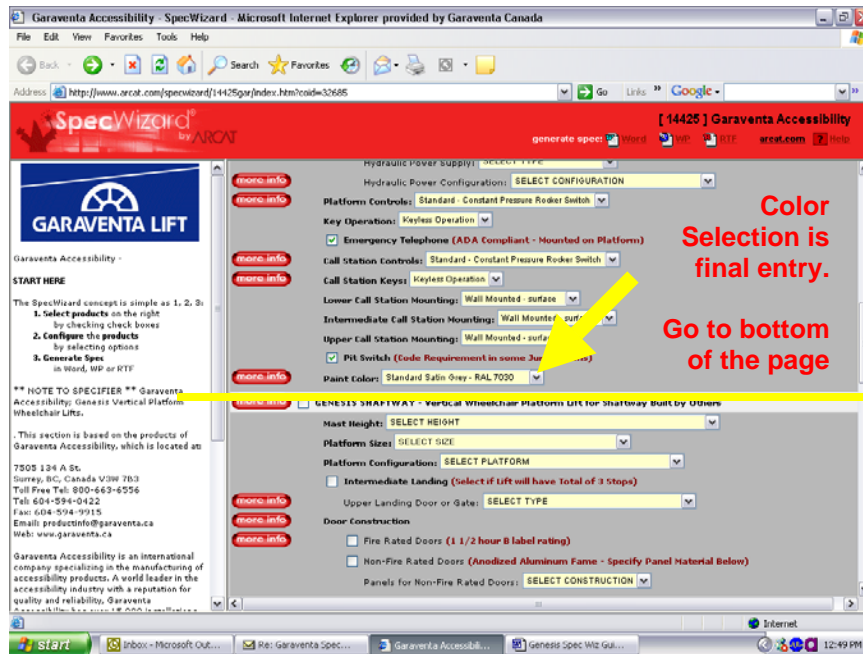
Ensure you select the same control type for both the Platform Controls and the Call Station Controls. They can't be mixed.

### Keyless or Keyed Operation

Ensure you select either keyed operation or keyless operation for both the platform and the call stations. They can't be mixed.

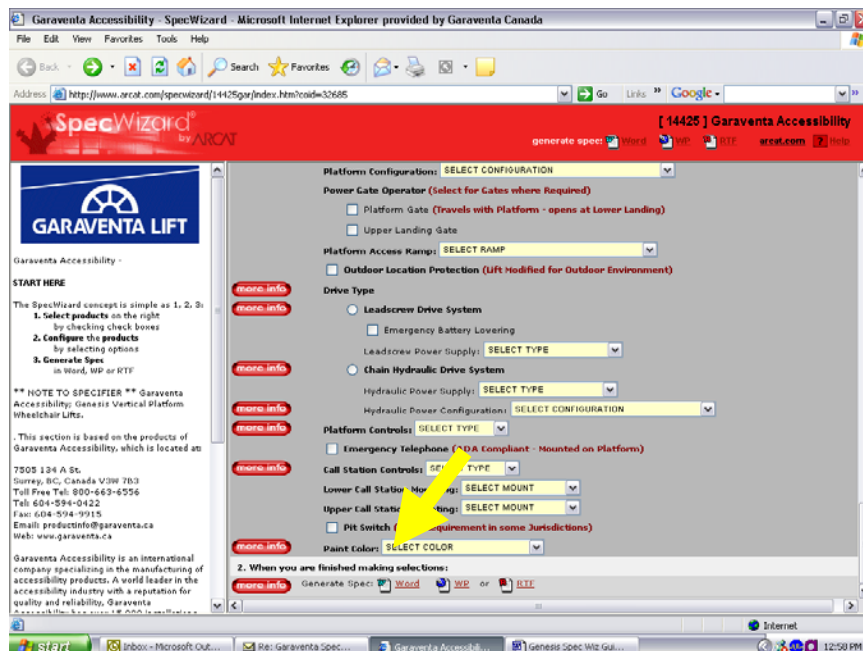
## Step 5 - Spec Input is Done After You Select Paint Color

The last selection entry for each model section is Paint Color. When you have made this selection proceed to the bottom of the page to generate the spec. You may see a light gray bar across the page. This is the start of a section for a different Genesis model. Skip this section and scroll to the bottom of the page.



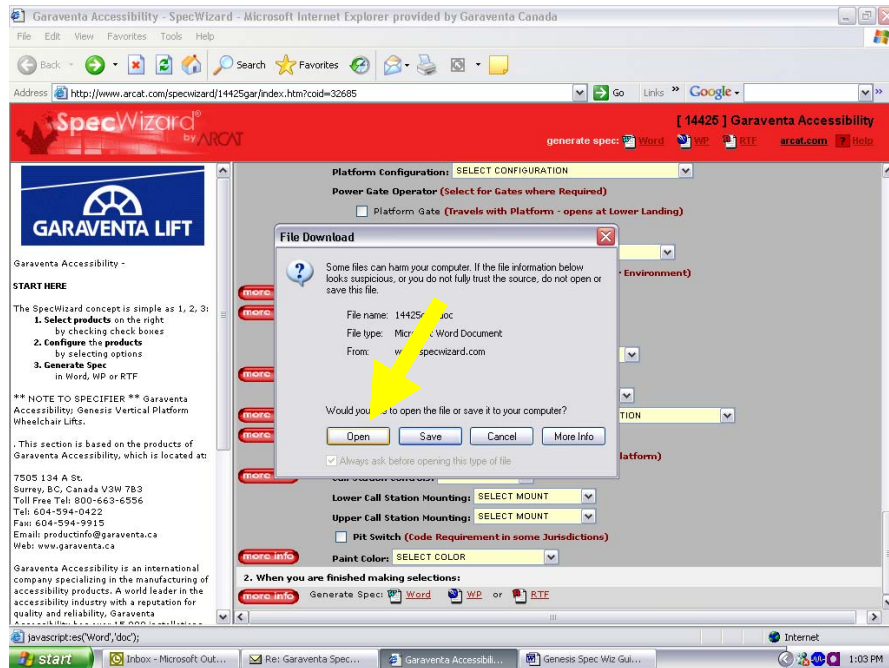
## Step 6 - Generate the Spec

Scroll to the bottom of the page and click on the desired file format for your spec.



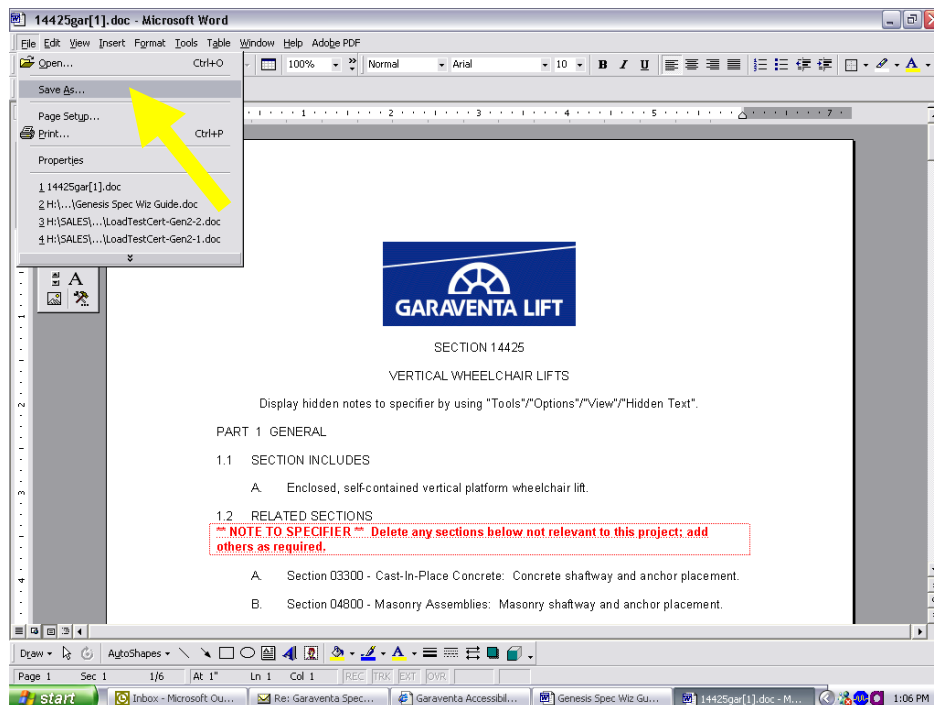
## Step 7 - Opening the Spec File

Select “Open” on the security popup to open the file on your desktop.



## Step 8 - Rename and Save the New Spec Document to Your Computer

We suggest you immediately use the “Save As” function to rename the new spec and save it to your own computer or network. It can then be safely edited and saved, or sent onward by email.



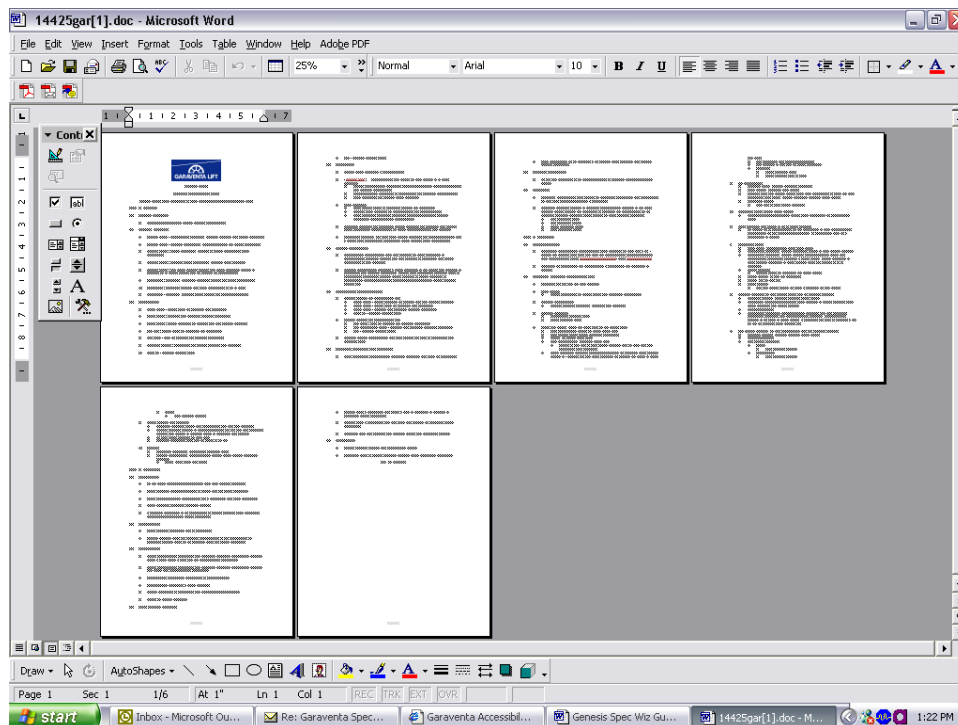


## Step 9 - Editing Your Spec

You will note that Section I of the new spec document contains red type called **\*\*Note to Specifier\*\***. This text precedes sections of the spec where selections are still required. Make your selections and delete the paragraphs not required. The spec sections will be automatically re-numbered.

This red text is in hidden text format and can be made to disappear in your final document. Instructions can be found at the top of the spec document just below the Garaventa Lift logo.

When this is done the result is a clean custom specification based exactly on the options selected on the input screen.



## Step 10 - Done!

If you require any assistance with the development of a Genesis vertical platform lift specification, or assistance with the use of this spec wizard please contact Garaventa Lift or the local Garaventa Lift authorized dealer.

Contact Garaventa Lift at 1-800-663-6556 or ++ 1-604-594-0422.

Email us at [productinfo@garaventa.ca](mailto:productinfo@garaventa.ca)

***Thank you for using the Genesis Spec Wizard!***